

High Volume Inspection of Parts Deliver Peace of Mind to Your Customers!



Turn-Key solution with high speed inspection of parts using 1 to 4 cameras and reliable LED lighting.



QS Examiner with three reject chutes

Why leave Quality to chance! Whenever a bad part is shipped to a customer there is a whole series of events that cost money, down time, and customer dissatisfaction. What is peace of mind worth? Knowing that your customer has just received parts that were 100% inspected builds confidence in you as a supplier.

Satisfied Customers buy more goods and cost less to maintain. The price of finding a new customer is extremely costly in time and money. Customers never call you when your parts are acceptable.

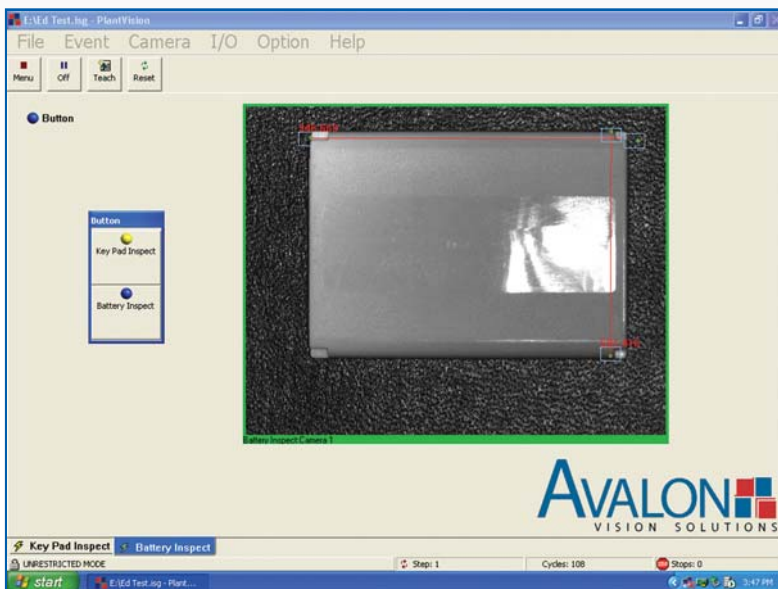
QS Examiner inspects parts for the smallest of defects. Parts that are less than 3 inches on a side can be fed through a bowl feeder into a separator mechanism at a rate of

between 1 and 4 parts per second. Up to 4 high-resolution cameras capture images to provide inspection of the parts from different angles. The system will automatically sort the parts into "Good" and "Bad" exit chutes. QS Examiner can be configured to have multiple defects reject sorting.

Why leave Quality to chance! Shipping defective parts to customers is costly to everyone

- Line worker identifies a problem with the Production Engineer
- QC determines it is a vendor supply problem
- Vendor is notified of Customer's problems
- Parts are shipped back to vendor for sorting and evaluation
- Corrective Action Requests are initiated
- Process Engineer initiates rigorous manual line inspections
- Production management schedules replacement part production
- Vendor reports corrective process changes to the Customer
- Customer decides if the Vendor will continue without performance penalties
- Many other activities within the Vendor's QC, Engineering, Production Control, Manufacturing Departments and the Customers organization are put in place to prevent the next bad part from getting to the Customer!

Have you ever thought about how many parts that need to be made perfect for a cell phone to assemble correctly?



The QS Examiner vision inspection machine is based on reliable Windows XP operating system utilizing Avalon's QualityStation vision program. There is no special programming language to implement and all attributes are configurable in the menus of the system. Sensor and control functions are handled in the industrial computer.

Part counting, failure tracking, and process limit controls are adjustable features of the QS Examiner product. Up stream equipment can be signaled when failure limits are reached. Job tracking, statistical reports, failure images and event logs are accessed through the Process Rx documentation and reporting database and can be accessed remotely via the local LAN.

Cameras and Lighting

640 x 480 or 1280 x 1024 pixel resolution
Robust LED Lighting with 100,000 hours MTBF
Near Infrared Lighting and Camera sensing techniques
Robust Industrial Cameras and Lights
Up to 4 Camera Capability

Machine Controls

Internal I/O handling up to 24 points
TTL, High Speed Reliable I/O signaling
Through Beam Light Sensor for Part Detection
External Control of Bowl Feeder

Feeding System

Bowl Feeders - Various Sizes
Part Separator - Allows Camera Access
Escapement Mechanism(s) - Up to 3 Reject Chutes
Rate Throughput: 1-4 Parts per second

Structure

Welded Steel construction
Mobile with lock down casters
Approximately 30"W x 36"L x 31"H

Required Facilities

60 PSI filter air
110 VAC, 5 AMP Max

15" TFT XGA LCD
Intel® Pentium® 4 CPU up to 3.06 GHz
System memory up to 2GB DDR SDRAM
Built-in FDD / CD-ROM drive
Built-in PCMCIA Type II x 2
One PCI expansion slot
10/100 Ethernet (NIC) Port (Gigabit optional)
2 - IEEE 1394 port
Resistive touch screens

QS Examiner Controller



Include for only **\$1500**
Process Rx

Powered by Process Rx™, the leading process documentation system that provides statistical and imaging reporting.

Your Local Avalon Representative

Avalon Vision Solutions, LLC
442 Thornton Road, Suite 104
Lithia Springs, Georgia 30122
Office: 770.944.8445
Fax: 770.941.7299
info@avalonvision.com