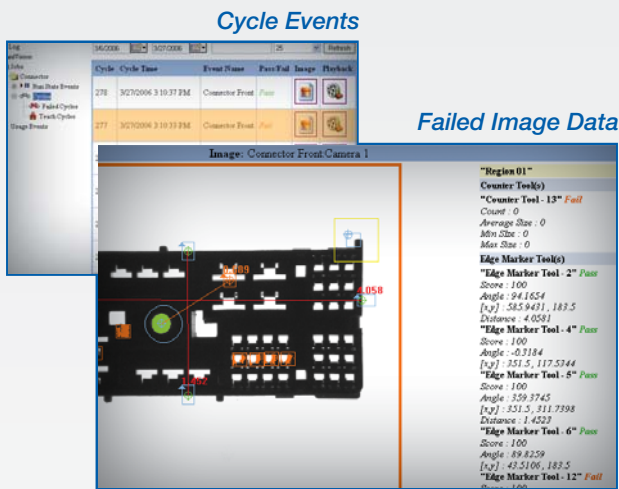


When knowing the facts is important ProcessRx™ will let you see what happened

Avalon's ProcessRx process documentation module with image database, event logging and statistical reports is the answer for your analysis needs. It is the most advanced and easy to use process documentation system available. The Internet Explorer WEB browser permits remote access using the LAN, however

most problems are exposed when the user can see an actual image of the inspection. ProcessRx can be configured to save all of the Failed images, all of the Passed images, or both. This powerful configuration technique allows the user to define exactly what data they need to capture.

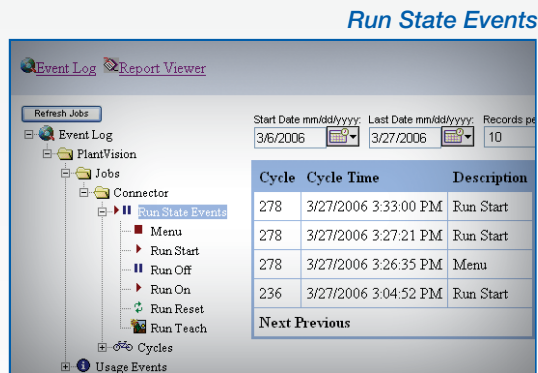


Event Log captures Usage, Run State, and Image Events that occur during the operation of the vision system. This data assists the engineer or technician to determine exactly what, when, and where a failure occurred in the process.

Up to nine previous images and the current image can be combined in sequence to create an animation Playback of the process prior to the inspection event. This creates a powerful analysis tool.

Cycle Events

- Logs measurement data specific to an inspection
- Verifies successful processes with images
- Playback image sequences



Failed Image Data

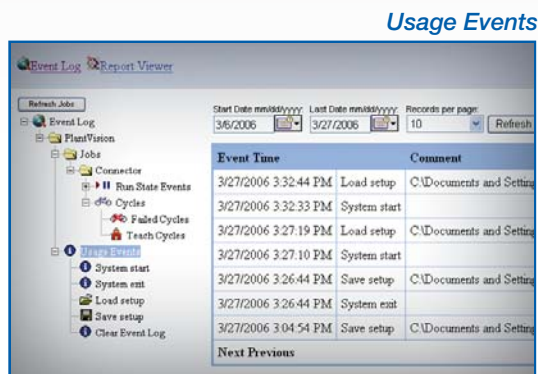
- Actual image
- Inspection criteria
- Measurement results

Run State Events

- Reveals and reports the history of vision Run Operations

Usage Events

- Reveals the history of file loading, saving, and changing
- Reports if inspection data was cleared from the database
- Unveils the need for additional training



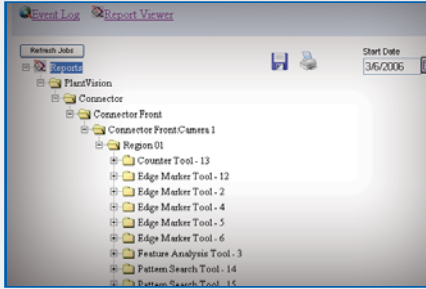
Application Example

Injection Molders use Image Event data to determine exactly which cavity has problems with parts or slides sticking in the mold half or with non-filled material. When the mold comes out for repair they know exactly where the problem occurs and can repair the proper area of the mold. Engineers of molding companies know exactly when the MoldWatcher system is being used and under what conditions. This is a time saving feature to determine root causes of problems.

Report Viewer

Reports are the hard copy confirmation of your process inspection results. They can be accessed via intranet, transferable PDF file, or attached printer. Configuring reports is easy via the Job Tree and are context sensitive at the Job, Inspection Event, Camera(s), Inspection Region, or Inspection Tool level.

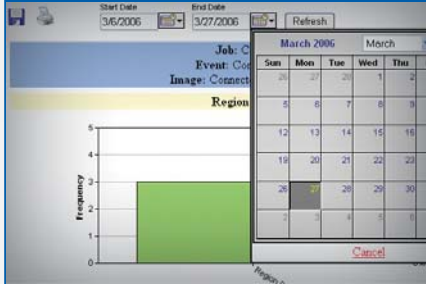
Job Tree



Report Output Options

- Bar graphs
- Scatter graph
- X Y Plot
- UCL & LCL, Averages
- Frequency of attributes
- Saving to PDF files
- Prints with a click of the button

Date Range



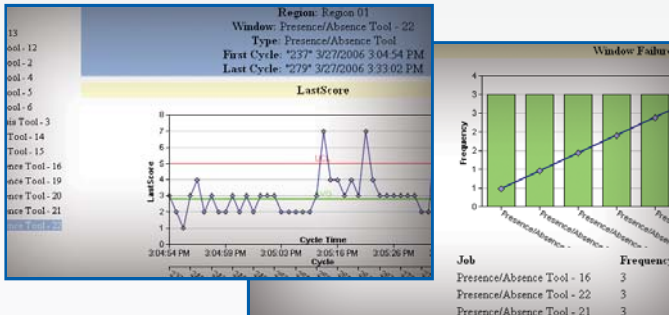
Job Tree

- Allows the user to drill down to the right level
- Precise inspection reporting resolves process uncertainty

Date Range

- Permits sorting through cumbersome data
- Date, Time, and Cycle Counts narrow the focus of the sort

Context Sensitive Display



Context Sensitive Display

- Each inspection tool has context sensitive statistical reports
- Presence Absence Tool Report example plots Cycle Number against Last Score
- Typical Charts have Upper Control Limits (UCL), Lower Control Limits (LCL) and Averages
- Enlightens you if the process is drifting out of control

Application Example

A medium sized Tier II supplier to the one of the big three US automotive companies was able to stop Charge Backs and Corrective Action Requests by implementing ProcessRx into their Quality Station inspection stations performing Sequencing. Inspection stations with ProcessRx kept track of each final assembly by serial number and were able to print PDF reports showing the product had left their plant fully assembled with no further damage. The actual PDF image reports of the final product were reviewed by the customer and all disputes were immediately settled. This was an incredible cost savings.

Your Local Avalon Representative

Avalon Vision Solutions, LLC
442 Thornton Road, Suite 104
Lithia Springs, Georgia 30122
Office: 770.944.8445
Fax: 770.941.7299
info@avalonvision.com